

Hartfields Retirement Village Cottages



- Available for Rent, Shared Ownership and Full Purchase
- Built to Lifetime Homes standard, with enhanced security features
- Energy efficient heating system
- On-site parking
- Support services and an extensive range of communal facilities available on-site

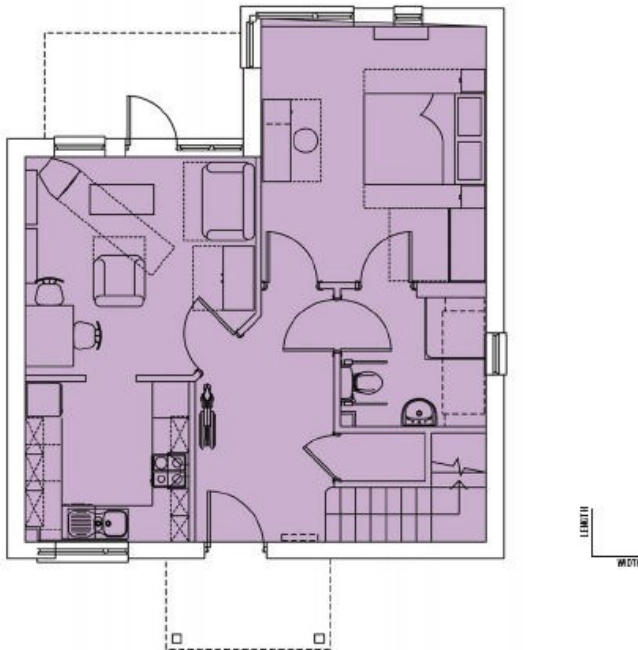
Further Information

For a full information pack, or to arrange a viewing contact:

Hartfields , Bishop Cuthbert, Hartlepool TS26 0US
T: 01429 855070 E: hartfields@jrf.org.uk

Cottage Layout and Dimensions

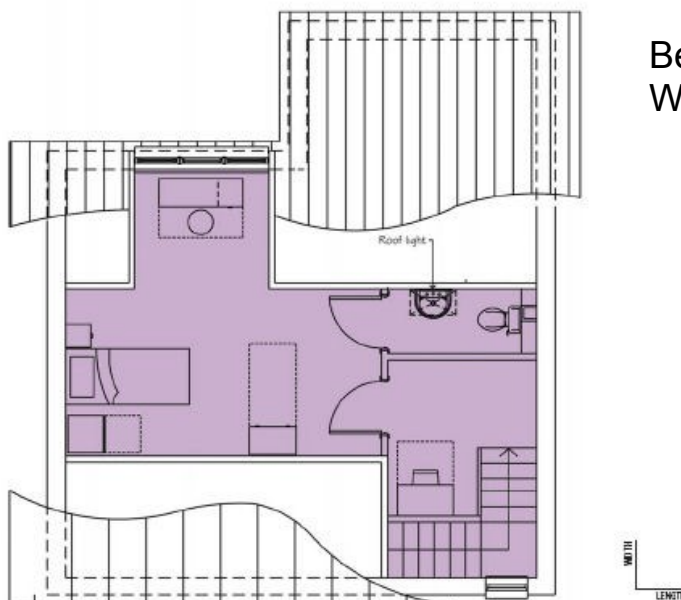
Ground Floor Plan 2 Bed Cottage



Ground Floor (Total Size 55 msq)

	Length	Width
Lounge	3.74m	x 3.54m
Kitchen	2.65m	x 2.60m
Bathroom	2.35m	x 2.22m
Bedroom 1	4.17m	x 3.64m

First Floor Plan 2 Bed Cottage



First Floor (Total Size 29 msq)

	Length	Width
Bedroom 2	5.04m	x 2.65m
WC	2.35m	x 1.20m